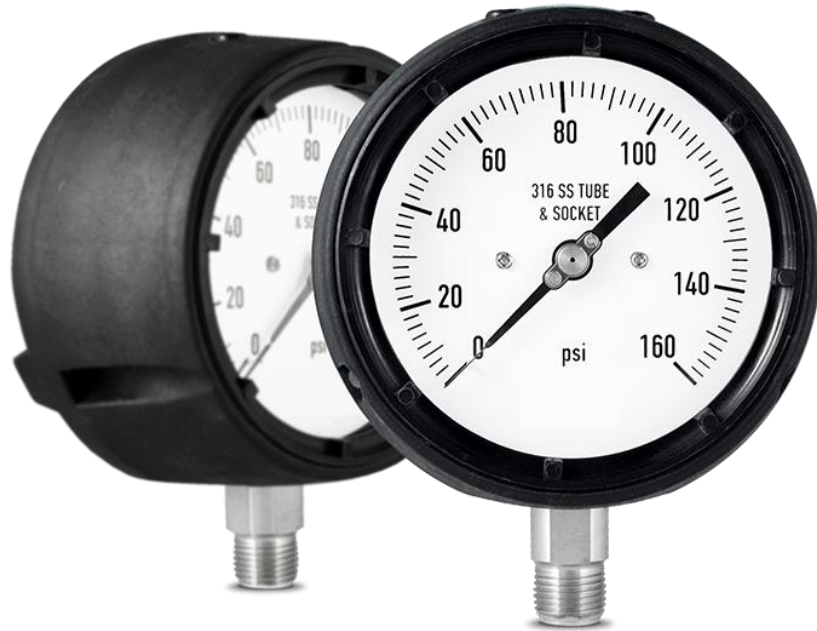


**FEATURES**

- Made of phenolic resin for extreme applications.
- Ranges from vacuum to 10000 psi.
- 4 ½” case (diameter) and 1/2” NPT bottom connection.
- Solid front and blow-out back .
- Indicator pointer with recalibration screw incorporated to the ranges line.
- Dual scale in psi and kPa.
- Stainless steel 316 internals.



**APPLICATIONS**

- Petro-chemical applications.
- Chemical Industry.
- Energy generating stations.
- Paper factories.
- Applications where precision, confidence, legibility and reliability are fundamental.

**OPERATING SPECIFICATIONS**

- Working pressure limitations
  - Dynamic Pressure:**  
Working pressure should be limited to 60% of the dial range.
  - Static Pressure:**  
The working pressure, where no sharp fluctuations occur, should be limited to 90% of the dial range.
- Process Temperature  
0°F to 212°F (-18°C to 100°C).
- Ambient Temperature  
0°F to 212°F (-18°C to 100°C).

	MODELS	SPECIFICATIONS
<b>Case</b>	115-700	Phenolic resin
<b>Bezel</b>	115-700	Strengthened propylene threaded
<b>Lens</b>	115-700	Safety glass
<b>Bourdon tube</b>	Models below 1000 psi	316 Stainless steel “C” shape tube
	Models 1000 psi and above	316 Stainless steel helical tube
<b>Connection</b>	115-700	1/2” NPT bottom connection in 316 stainless steel
<b>Movement</b>	115-700	316 Stainless steel
<b>Accuracy</b>	115-700	± 0.5% Full scale (ASME B 40.1)
<b>Pointer</b>	115-700	Aluminum painted in black with recalibration screw
<b>Dial</b>	115-700	Aluminum, white background with double scale psi and kPa in black

**\* SPECIAL REQUEST**

Please contact factory for special dial artwork and ranges.

## ORDERING INFORMATION

SERIES	<b>700</b>					
SIZE	<b>115</b> 4 1/2"					
CONNECTION TYPE	<b>700</b> Bottom connection					
PRESSURE RANGES	<b>30VAC</b> -30 in Hg vacuum to 0	<b>100</b> 0 to 100 psi	<b>600</b> 0 to 600 psi	<b>5000</b> 0 to 5000 psi		
	<b>15</b> 0 to 15 psi	<b>160</b> 0 to 160 psi	<b>1000</b> 0 to 1000 psi	<b>10000</b> 0 to 10000 psi		
	<b>30</b> 0 to 30 psi	<b>200</b> 0 to 200 psi	<b>2000</b> 0 to 2000 psi			
	<b>60</b> 0 to 60 psi	<b>300</b> 0 to 300 psi	<b>3000</b> 0 to 3000 psi			
SCALE OPTIONS	<b>psi</b> psi - kPa					
OTHER OPTIONS	<b>GL</b> Glycerine filled					
EXAMPLE	<ul style="list-style-type: none"> <li>Select dial size..... 115</li> <li>Select case and connection location..... 700</li> <li>Select pressure range and scale option..... 100 psi</li> <li>Select any required accessory or option..... GL</li> </ul> <p><b>115-700-100-GL</b></p>					

## OUTLINE DIMENSIONS

### 115-700

